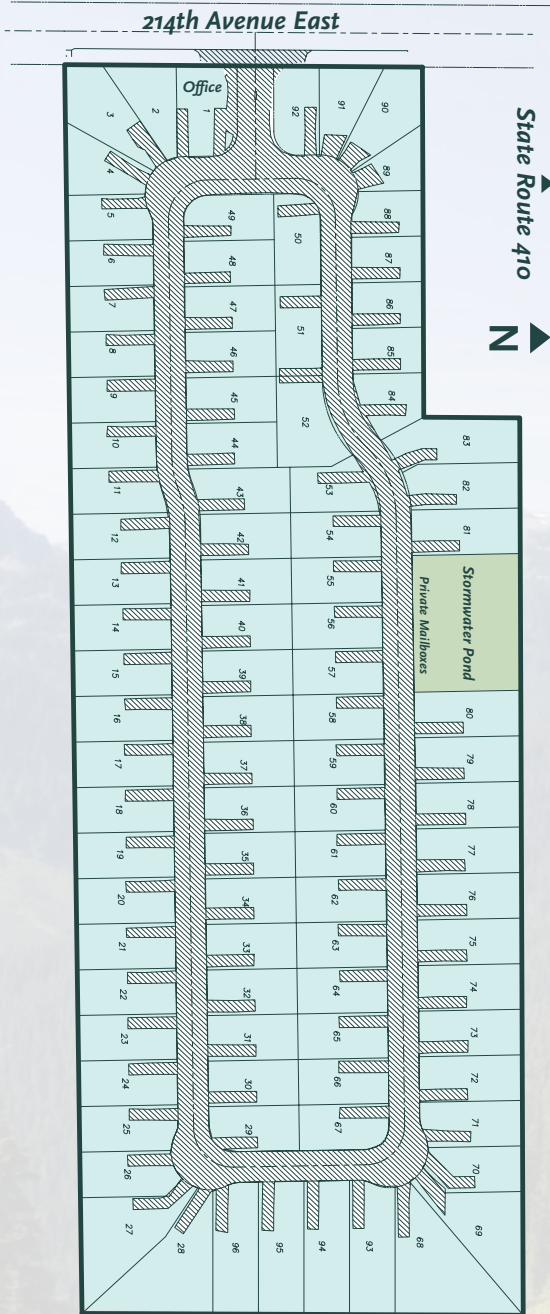


10301 214th Avenue East



RV's 10 years old or newer welcome!

Need more living space? Ask us about our affordable packages on new park models and new single or double-wide homes for your space at Woodside Manor.



10301 214TH AVENUE EAST
BONNEY LAKE, WA 98391

TEL: 253-223-4663

E-MAIL: INFO@WOODSIDEMANOR.BIZ

WWW.WOODSIDEMANOR.BIZ



Quest Homes



WOODSIDE
MANOR

BONNEY LAKE, WA



WOODSIDE
MANOR

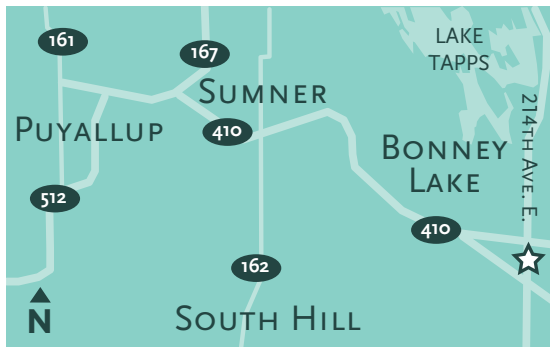
CLOSE TO BONNEY LAKE PLAZA, BONNEY LAKE VILLAGE AND TALL FIRS SHOPPING CENTERS, HOME TO AMENITIES INCLUDING:

- Safeway
- Fred Meyer
- Home Depot
- Rite Aid
- Regal Cinemas
- Starbucks
- Banks
- Dental clinics
- Gas Stations
- Restaurants

WOODSIDE MANOR IS LOCATED ACROSS THE STREET FROM THE WSU DEMONSTRATION FOREST.

PLANS FOR THE 147-ACRE WSU DEMONSTRATION FOREST INCLUDE A MAJOR MEDICAL CENTER, YMCA, SPORTS FIELDS, PARKS AND FOREST WALKING TRAILS.

WOODSIDE MANOR IS JUST THREE MILES FROM ALLAN YORKE PARK AT LAKE TAPPS, WHICH BOASTS TENNIS COURTS, PUBLIC SWIMMING, A BOAT LAUNCH AND MORE.



A quiet and clean community in Bonney Lake, WA. Choose your site and enjoy the open space on these oversized lots. Our community is close to Sumner, Puyallup and Tacoma.



VETERANS WELCOME.
20 MINUTE COMMUTE TO MILITARY INSTALLATIONS.

COMMUNITY DETAILS

- Large lots, ample room for all slides and outdoor living
- Private mail boxes available on site
- Full time RVers welcome
- Spaces are 48' wide by 90' deep
- Park Model office on Site #1
- Pet friendly

CITY:	CITY OF BONNEY LAKE
COUNTY:	PIERCE COUNTY
SEWER:	BONNEY LAKE UTILITIES
WATER DISTRICT:	VALLEY WATER DISTRICT
FIRE:	EAST PIERCE COUNTY FIRE
POWER:	PUGET SOUND ENERGY
PHONE:	CENTURYLINK
CABLE:	COMCAST CABLE

Need more living space? Ask us about our affordable packages on new park models or new single or double-wide homes for your space at Woodside Manor.